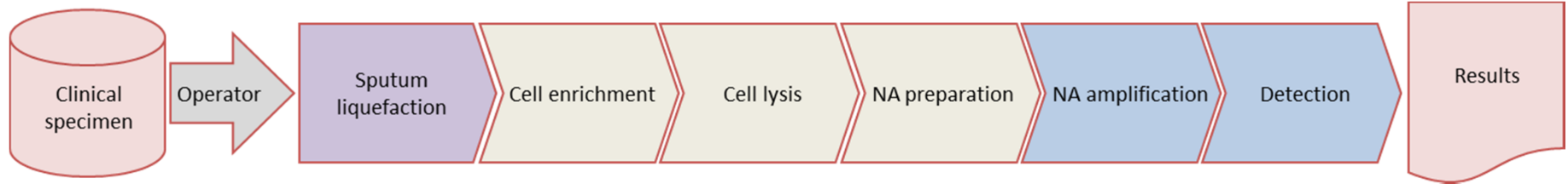




Rethinking TB POC diagnostics – simplicity rules

October 2014

Andy Wende



user-friendly

fully automated processing

cheap

no active valves or metering, few plastic parts, reusable for reflex DST

robust

no moving parts, no microfluidics

versatile

applicable to broad range of cells & viruses in swabs & liquids

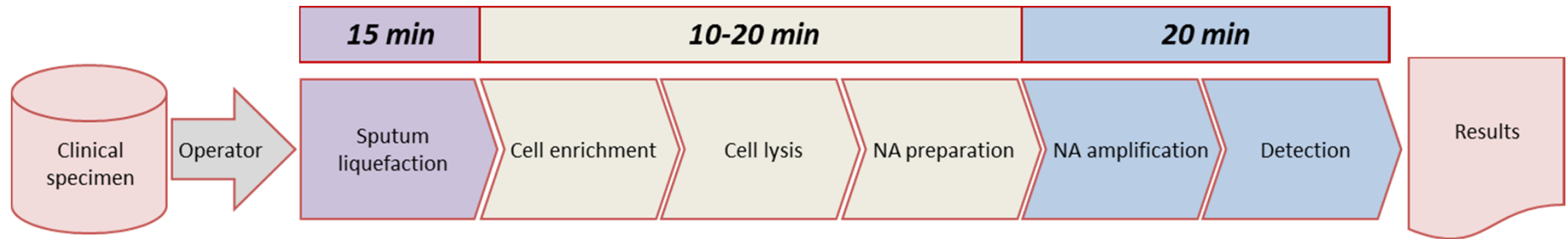
rapid

TAT: swabs 30min, liquids 40min (sputum 55min)

sustainable

battery-powered, stand-alone, self-calibrating





Liquefaction

- NaOH based
- TB inactivation

SpeedXtract

- cell enrichment
- heat lysis
- reverse purification (inhibitor removal)

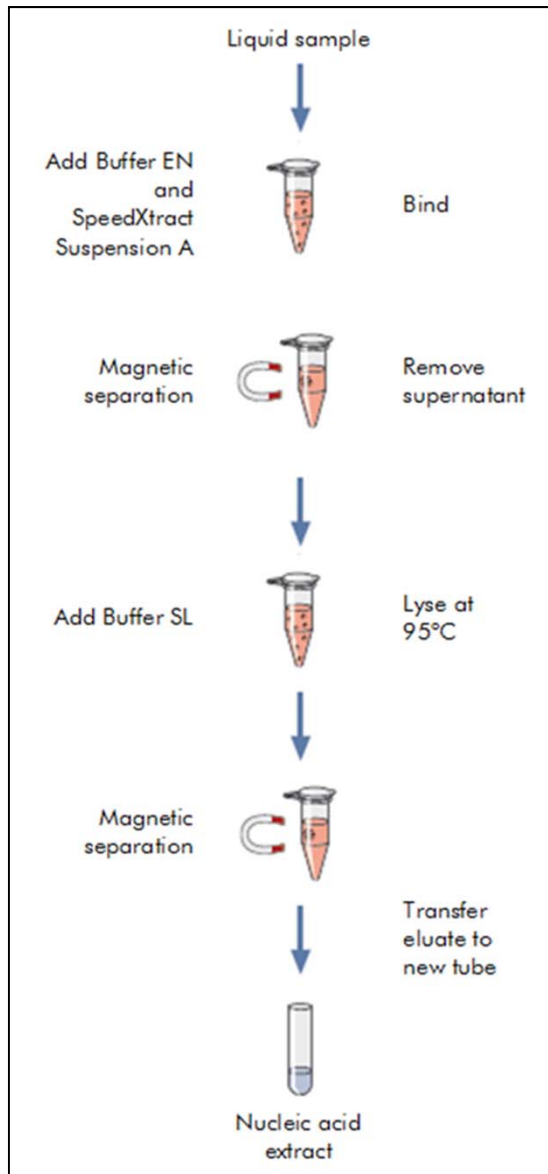


HDA + TubeScanner

- isothermal amplification
- PCR-like sensitivity
- real-time multiplex detection
- data management
- self-calibrating instrument
- full range of connectivity



SpeedXtract – novel generic sample preparation

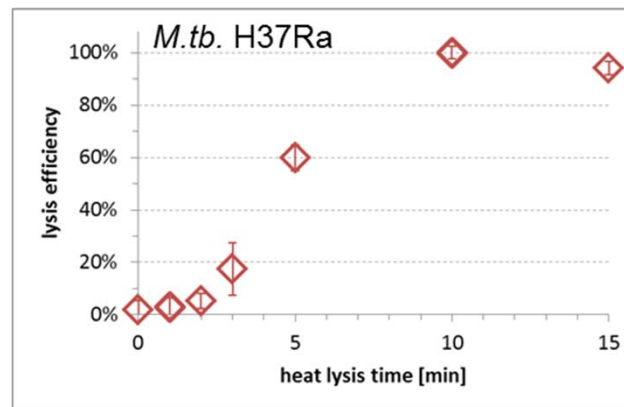
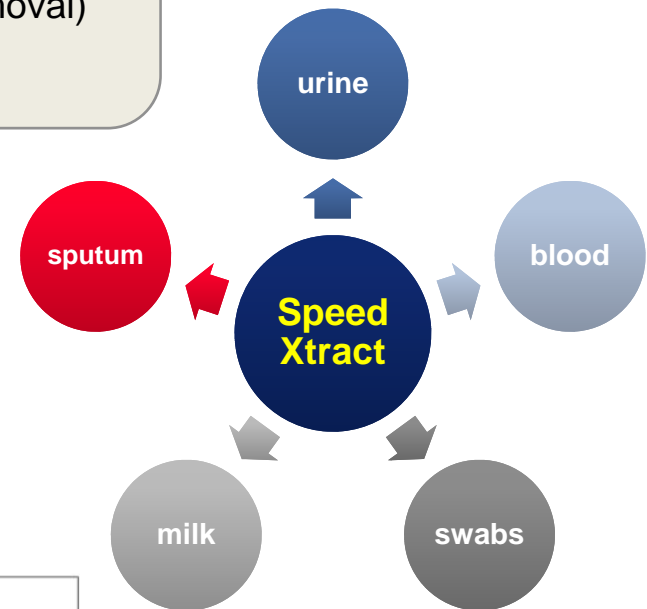


SpeedXtract

- designed for automation
- dual-purpose magnetic beads (enrichment & inhibitor removal)
- efficient heat lysis
- reverse purification

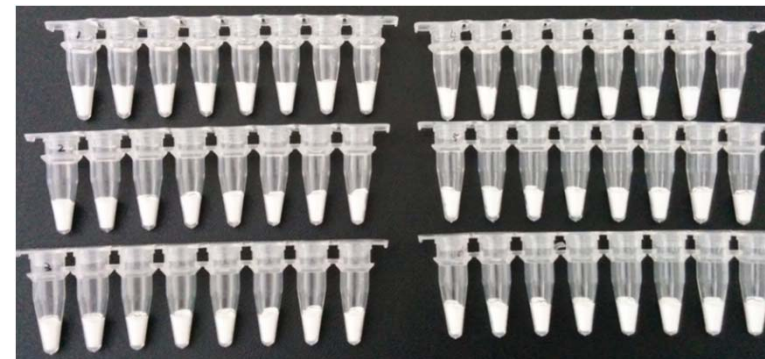
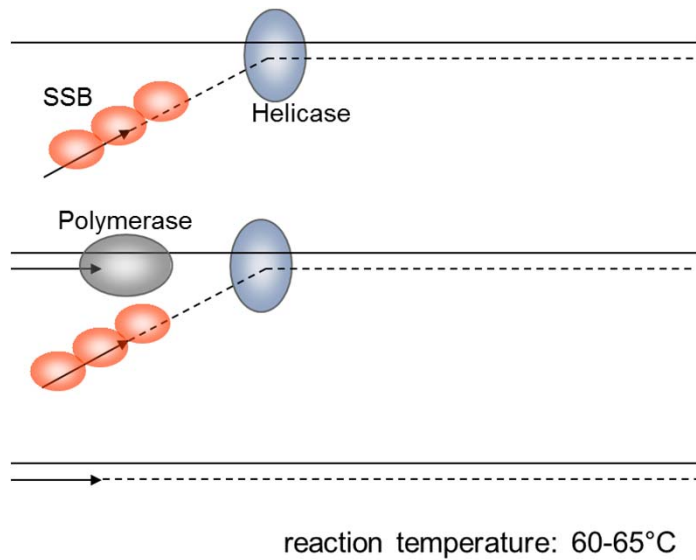
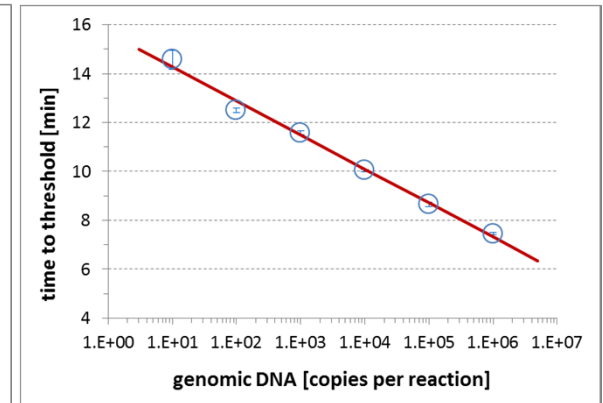
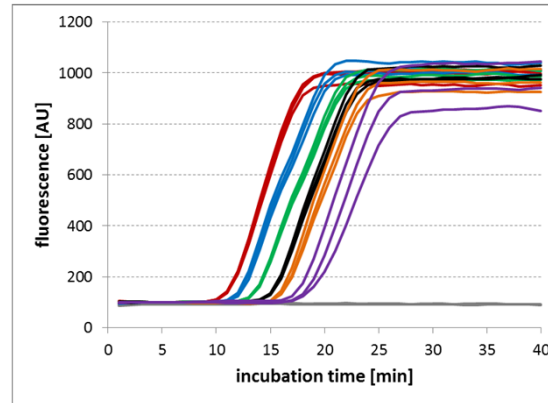
target cell types:

- human cells
- gram-neg. bacteria
- gram-pos. bacteria
- protozoa
- viruses



Helicase-dependent amplification

- isothermal amplification
- PCR-like sensitivity
- real-time multiplex detection



M. tuberculosis - specific HDA:

- includes internal amplification control
- dried reagents available
- LoD = 10 cp TB / reaction

TubeScanner

- real-time fluorescence detection
- self-calibrating optics
- data management
- full range of connectivity
- modular design concept

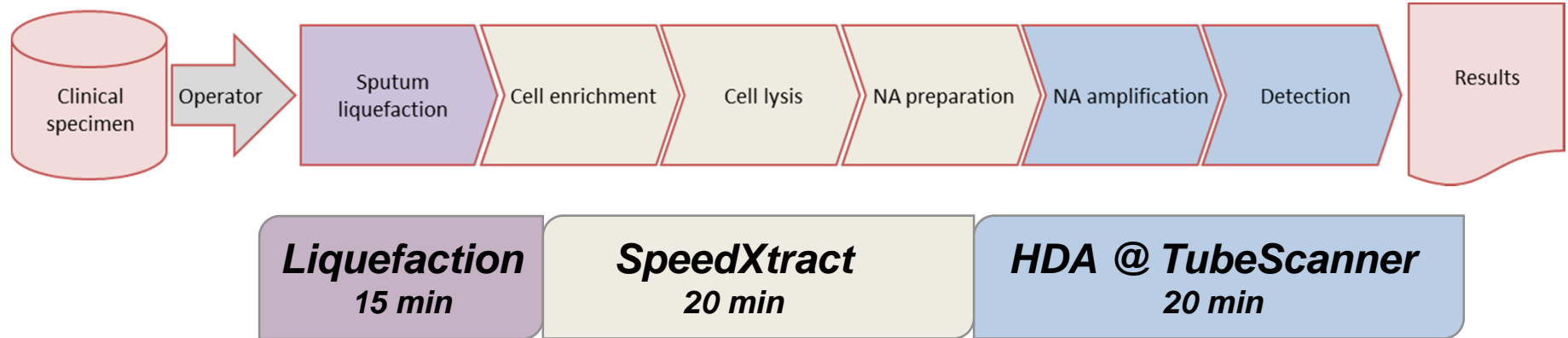
Instrument features

- Up to 12 samples (up to 200 µl volume each)
- 10°C – 95°C sample temperature
- Up to 6 fluorescence channels
- Variety of safety and self-test features
- Internal solid-state fluorescence standards
- Automated result interpretation

- autonomous operation via 7" touchscreen
- powered by rechargeable battery pack
- LAN / WiFi / GSM connectivity
- HIS / LIMS communication (HL7 standardized)
- Barcode / RFID support (internal and external)
- External label printer available
- size 23 x 23 x 14 cm, weight 4 kg



Lateral Flow Reader
(instrument sibling of TS)

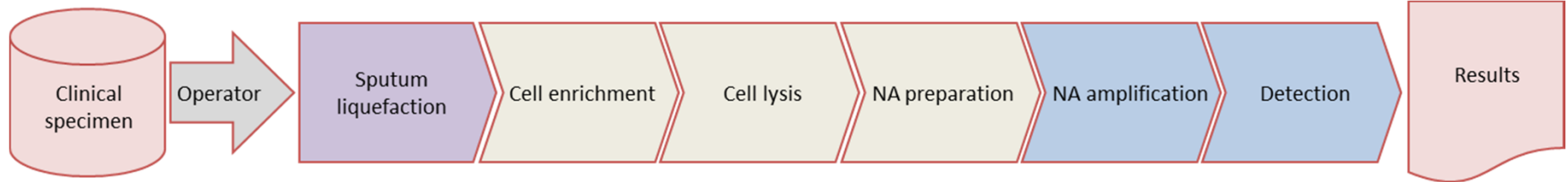


smear

| | | | |
|---------------|------|---------------|------|
| | | <i>N = 79</i> | |
| | | pos. | neg. |
| <i>TB-HDA</i> | pos. | 19 | 9 |
| | neg. | 4 | 47 |

culture

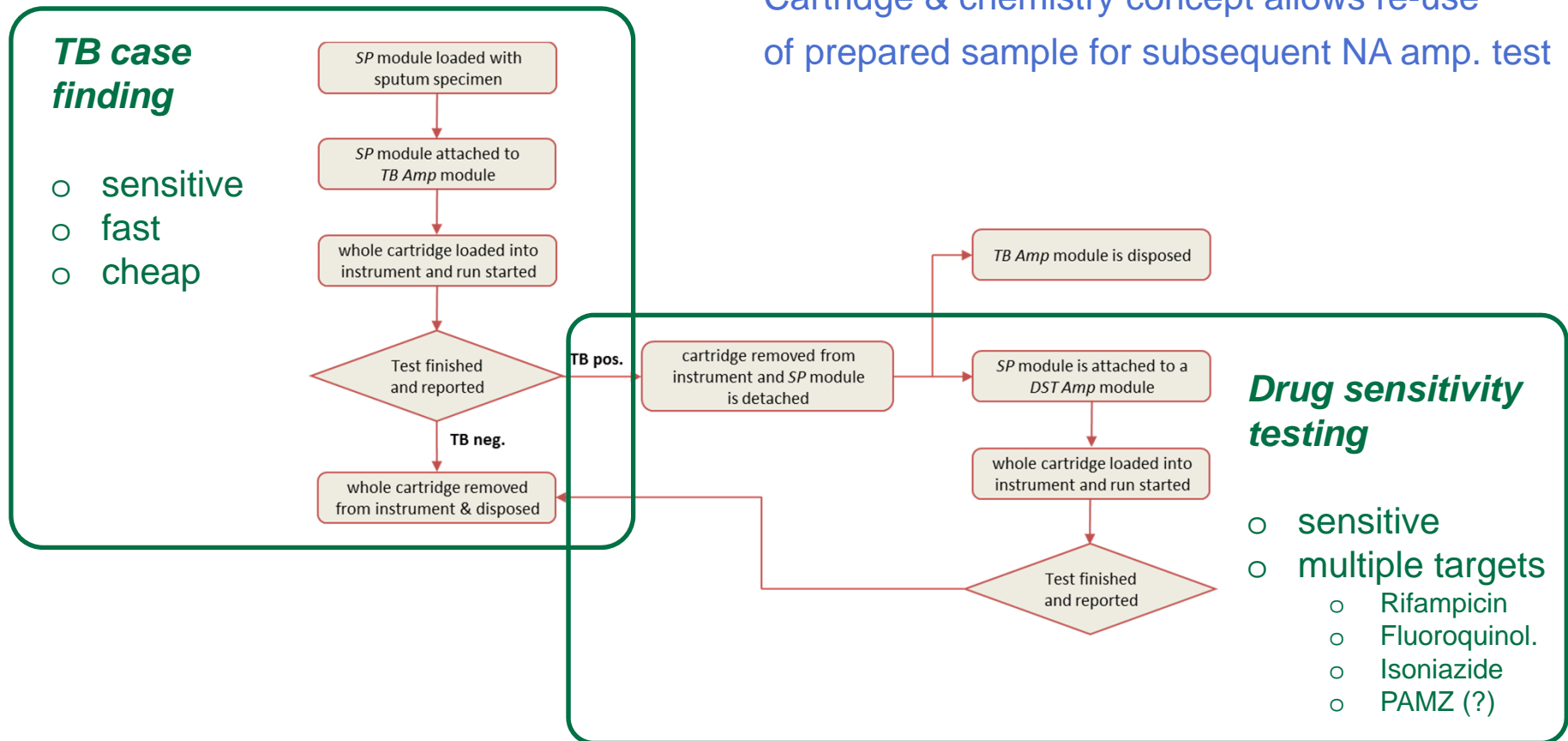
| | | | | |
|---------------|------|---------------|-----|------|
| | | <i>N = 52</i> | | |
| | | pos. | NTM | neg. |
| <i>TB-HDA</i> | pos. | 5 | 1 | 7 |
| | neg. | | 1 | 38 |



- fully automated SpeedXtract
- multiplexed real-time isothermal amplification (HDA) (geometric, fluorescent, melt temperature)
- nucleic acid extract can be reused for reflex DST
- builds on Tubescanner modules
- accomodates up to 3 cartridges
- random access mode
- stand-alone operation
- battery-powered
- print-outs and electronic connectivity

TB case finding can be separated from Drug Sensitivity Testing (DST)

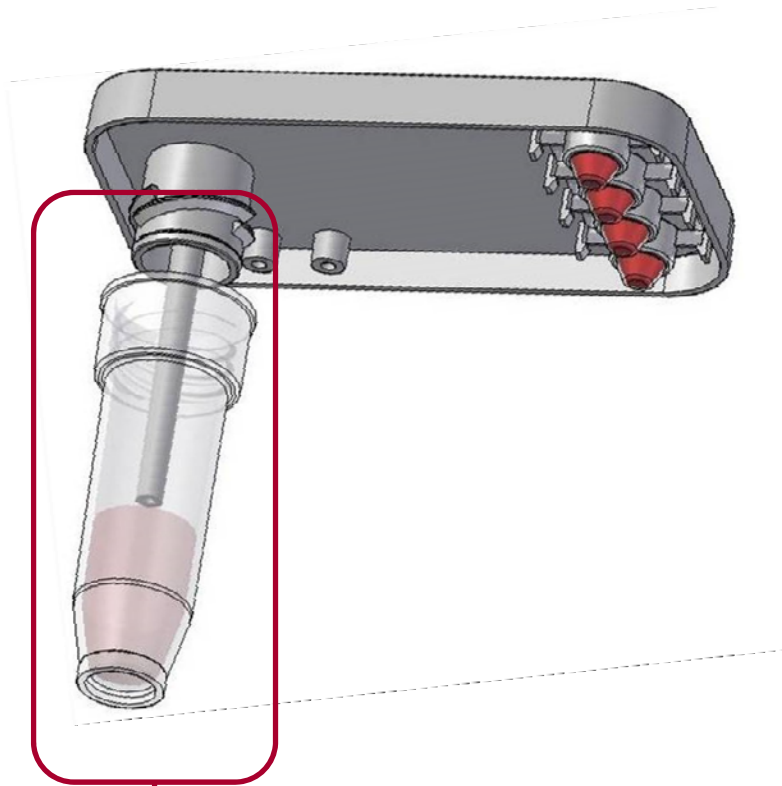
Cartridge & chemistry concept allows re-use of prepared sample for subsequent NA amp. test



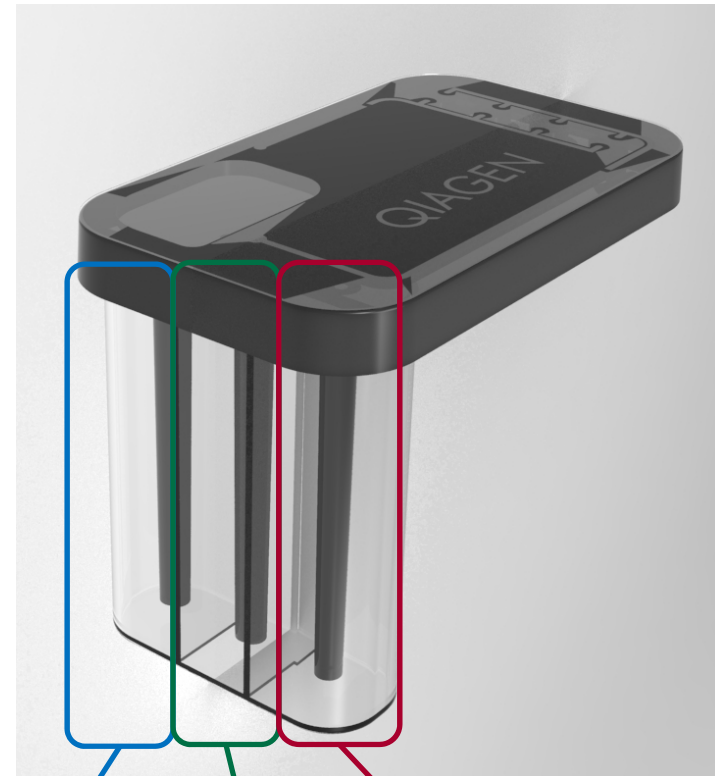


Back-up slides

Cartridge designs



cell lysis



sputum
liquefaction

cell
enrichment

cell lysis